



PATHWAYS TO WELLBEING

Creativity 4 Wellbeing @ Holburne
Museum

Making of Me Collage
Inspiration

Extra Resources



Anna Bu
Kliever



Barbara Kruger

your body

is a

battleground

Barbara
Kruger

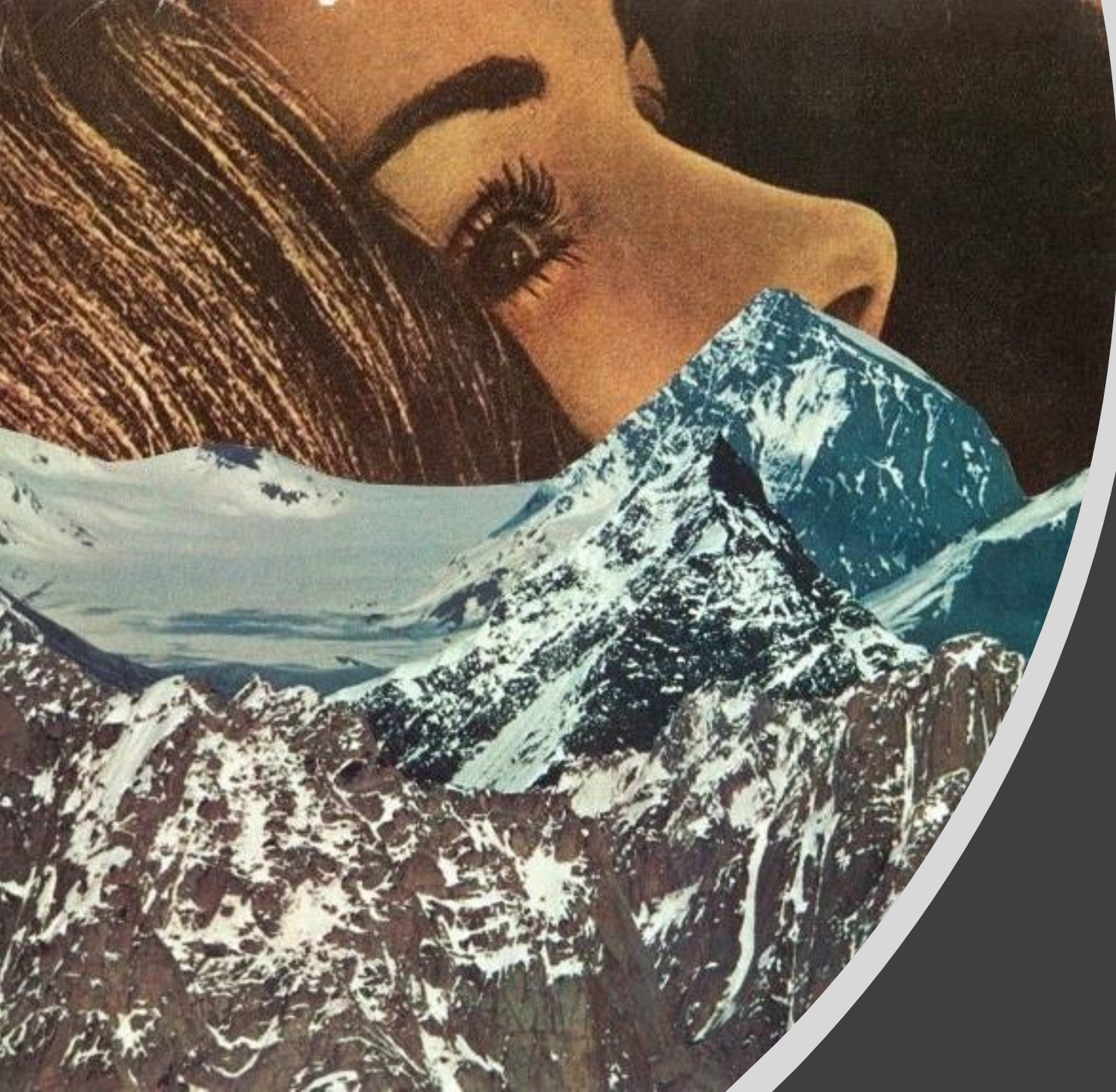




Hannah Hoch



Heliya Refaei



Jesse Treece



John Stezaker

GET OUT FROM



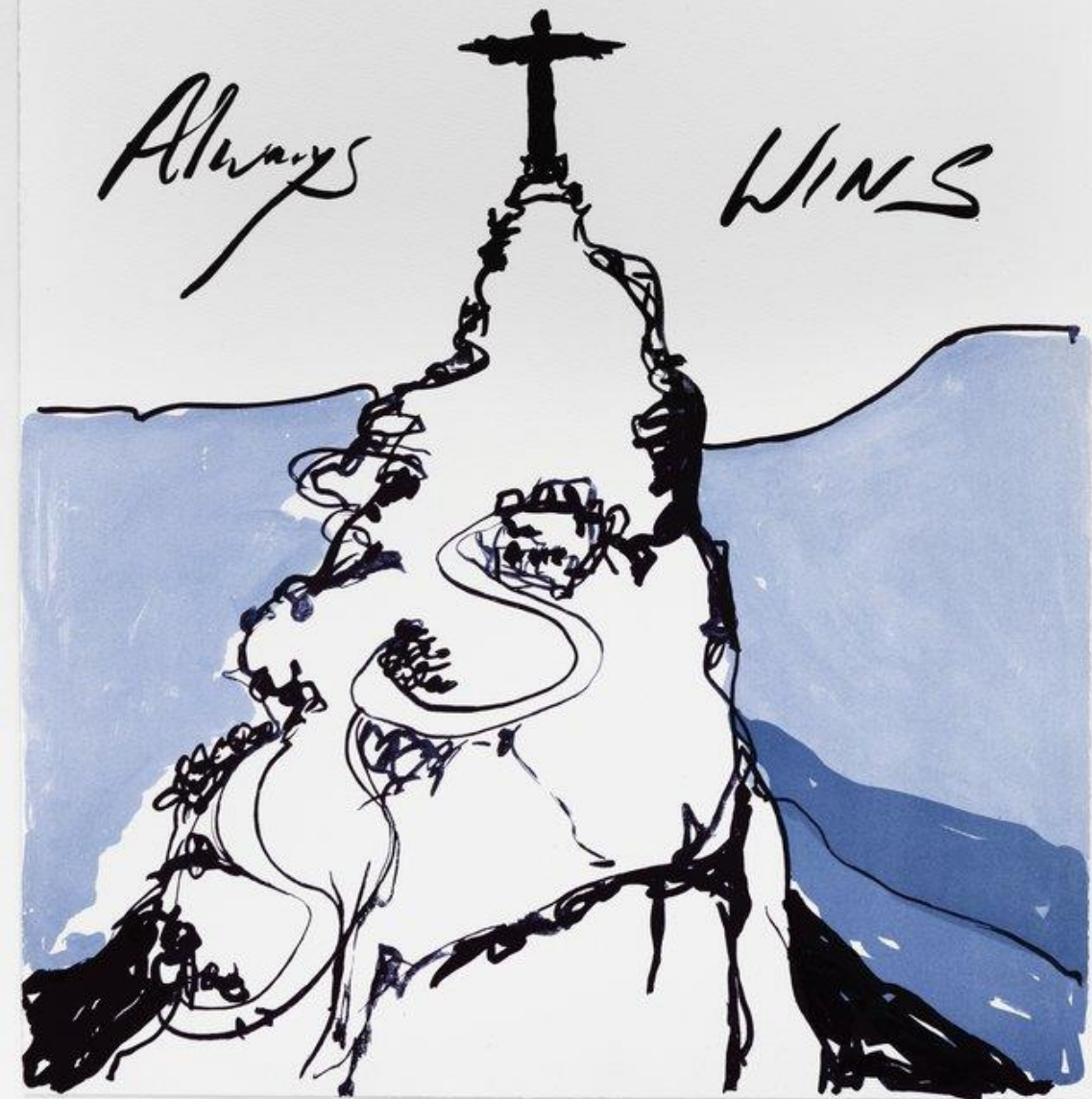
LIVING INSIDE OF ME

Tracy Emin

TRUE Love

Always

WINS



Tracy Emin

Tracy Emin

You inspire me with
Your determination
And I Love You



It was just a kiss
X

Tracy Emin



Riikka Fransila



Jessica Whittingham



Fabu Pires



THE
HOLBURNE
MUSEUM

Things to think about

- Powerful/meaningful words (Kruger and Emin)
- Similar textures (Kliwer and Treece)
- Repetition (Refaei)
- Scale (Hoch)
- Uncanny juxtapositions (Stezaker)
- Organic forms growing out of parts of your picture (various artists)