



Paper sculpture

Today, taking inspiration from our current exhibition Nicholas Pope: Portraits of a Marriage, we will make paper or card sculptures based on a person or relationship.

Nicholas Pope (b.1949) is a sculptor who studied at the Bath Academy of art (1970-73). A contemporary of artists such as Anthony Gormley, his practice was interrupted by illness in the 1980s.

Portraits of a Marriage includes 10 sculptures which depict – in entertaining, abstract but honest form – the artist and his wife at different stages of their life together during more than 40 years of marriage. The series began in 1978 with Mr and Mrs Arnolfini and culminated last year (2020) with Mr and Mrs Pope Dead and Buried, which was made in the shadow of the late Janet Pope's terminal cancer.

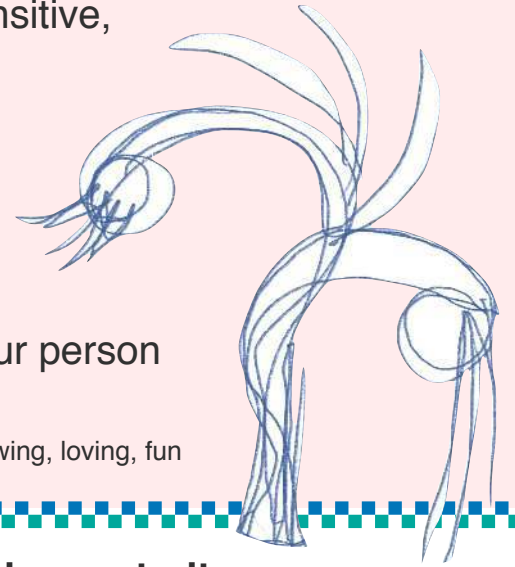
The exhibition shows Nicholas Pope's personal development over five decades, exploring a variety of psychological states and the nature of his relationship with Janet in sculptures of wood, metal, glass, ceramic and shrunken wool. Many of the sculptures have a related drawing, which will be displayed alongside the corresponding sculpture.

Look at the Nicholas Pope sculpture opposite. These shapes could have been made in card. They are simple and yet the curve and way they stand give them character. They seem quite solid and calm and are leaning in to each other like people embracing.



Activity

- Choose a person in your life. It might be a friend, colleague or family member. It could be a fictional, famous or historic character.
- Do a brainstorm about this person, their personality and what they mean to you. Some descriptive words might help you: warm, caring, loud, sparky, supportive, hilarious, complicated, funny, moody, sensitive, confident.
- Try some abstract thinking. Is this person smooth, flowing, jagged, undulating, fragile, solid, twirly, tangled, dynamic, pink, yellow or green?
- You could do a quick doodle on paper to express your person visually — — — — — ->



Doodle words: strong, vulnerable, growing, loving, fun



Making a 3D expressive portrait

You will need: paper or thin card, scissors, glue, stapler or tape.

There are various ways to manipulate paper or card: bend, fold, squash, crease, score, concertina, slot together (construction).

Now have a go! Make shapes, textures and forms which describe your person. E.g Fun might be spirals, loving might be curves.

You may make your sculpture from one shape and manipulate this, or attach sections with tape. It can be as simple or complicated as you like.



Maybe attach your art to a card base or plinth and ask someone if they can tell who it is!

You could make a sculpture describing two people and their relationship using the same method.

Why not make a sculpture like this with other materials in your house such as: fabric, wool, wire, twigs, string, flour and water.



