



Bead Basket

Design and decorate!

Make a simple paper or card basket and enjoy decorating it.

Take inspiration from this delicate bead basket from the Holburne's collection, which has survived since the late 1600s!

Enjoy building up your own patterns or images using dots (instead of beads) like in Pointillism paintings. You might want to commemorate a special event or focus on the King & Queen, or the lion depicted in tiny beads.



Beadwork basket, about 1660-70

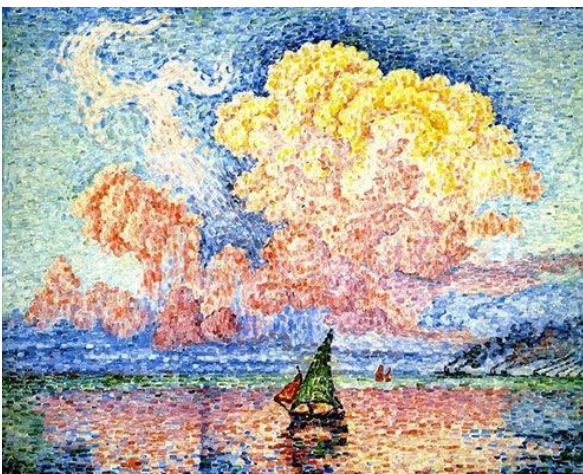
The basket was probably made by a talented young girl in a wealthy household around the time of the Great Fire of London. Thousands of tiny glass beads have been threaded onto a wire frame which show the marriage of Charles II and Catherine of Braganza.

Unlike many tapestries from this time the basket has not faded and the colours of the glass beads are still bright; the lion looks very fresh against the green background with little flowers at his feet.

In heraldry the lion symbolises courage, nobility and strength.

There is a short film about the basket here:

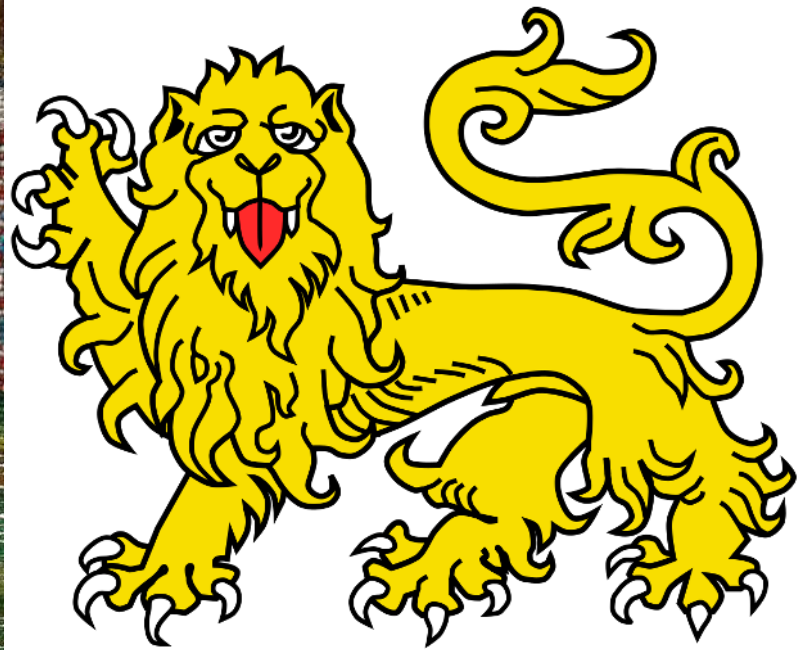
<https://vimeo.com/65055229>



Pointillism

Pointillism was a painting technique pioneered by Georges Seurat and Paul Signac in Paris in the mid-1880s. Their paintings were made by carefully placing dots of pure, unmixed colour next to each other. It was inspired by a book about how the eye processes colours used in tapestry, and how complementary colours enhance each other's intensity— like putting blue with orange, for example.

Bead basket — Inspiration



Thomas Toft was an English potter, working at around the same time as the beadwork basket was made. His commemorative works also depicted Kings and Queens, with decorative repeated patterns, painted in slip.



Share a photo of what you make!
Send to e.blythe@holburne.org

Instagram

[changing_lives_through_art](https://www.instagram.com/changing_lives_through_art)



Activity *(see next page for further help!)*

Start by using a ruler to draw a rectangle on a piece of paper or cereal box card.

Cut out a small kite shaped piece of card from each corner as shown overleaf.

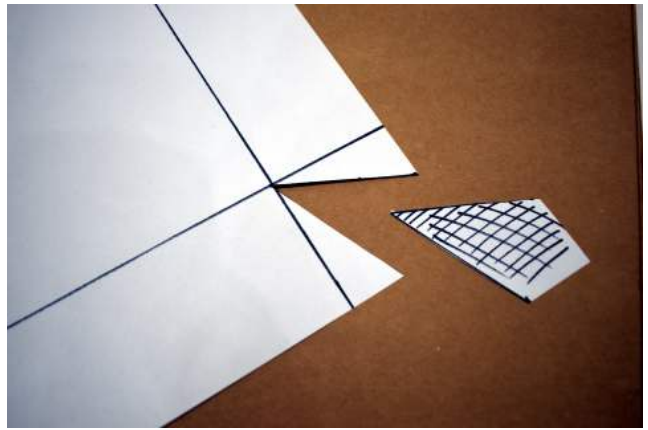
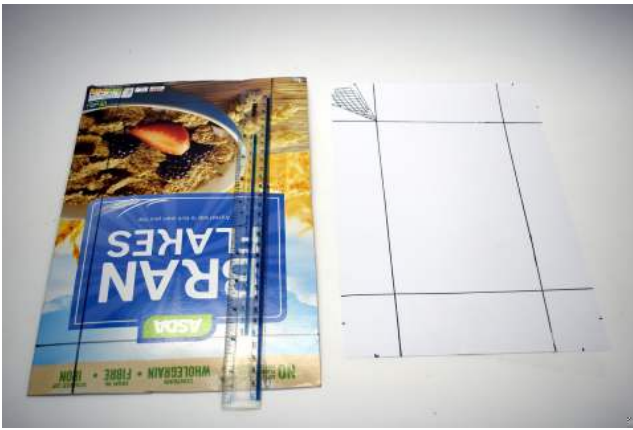
Fold along the lines and turn it the right way up.

Do NOT assemble until you have decorated the inside! *Work flat noticing where the paper folds are.*

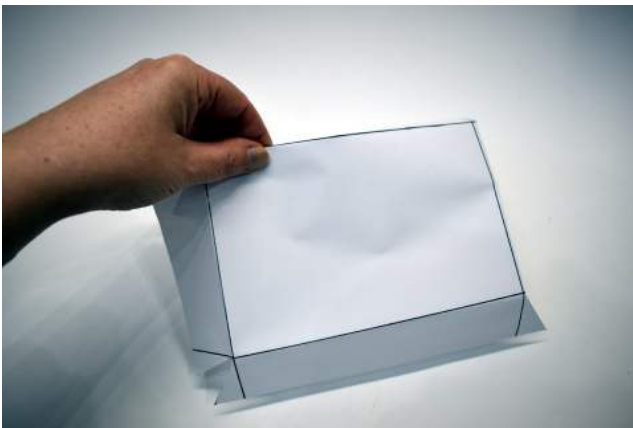
You could:

- Use paint to create background colour
- Mimic the beads by using dots of paint, felt tip pen or collage
- Make your own collage or design inspired by lions, or kings and queens

Once the decoration is dry, tape up the corners on the outside as shown overleaf.



- A4 plain paper or rectangle of card
- Use a ruler to draw a grid to mark out the base of your basket
- Cut out a small kite shaped piece from each corner



- Fold along the lines to make the sides and base of your basket
- Put it the correct way up: do not join the corners yet
- Enjoy decorating the inside of your basket



- Once finished pull the sides up and secure each corner join with tape (from the outside so it doesn't show!)
- If uneven trim the corner with scissors
- **Ready to go! Why not pop in some home made biscuits and give as a gift?**