

HolburneNews



Autumn 2022

Welcome

What could be a better way to brighten an autumnal day than a 'preview' of spring blooms? We are planning a trip to Warwickshire's Compton Verney to a special show of beautiful 17th century Dutch flower paintings loaned from the National Gallery. Still tickets left for our convivial



Quiz evening, where delicious wine and homemade food will be served, along with plenty of fun and fiendish questions to tax your 'little grey cells'. Visit our Autumn Leaves sale, a chance to buy from an array of high quality secondhand books, plus unique hand-crafted cards for all occasions.

Continuing the seasonal theme, A Winter's Tale comes to the Holburne in musical form - talented voices from Dowland Youth Works, directed by Sam Brown, "the Eric Clapton of the Lute", and Laurence Williams, performing music by Dowland himself, popular Elizabethan tunes and a good measure of Shakespeare.

Do come and enjoy these events with us!

Jonno Davis
Chairman of Holburne Supporters

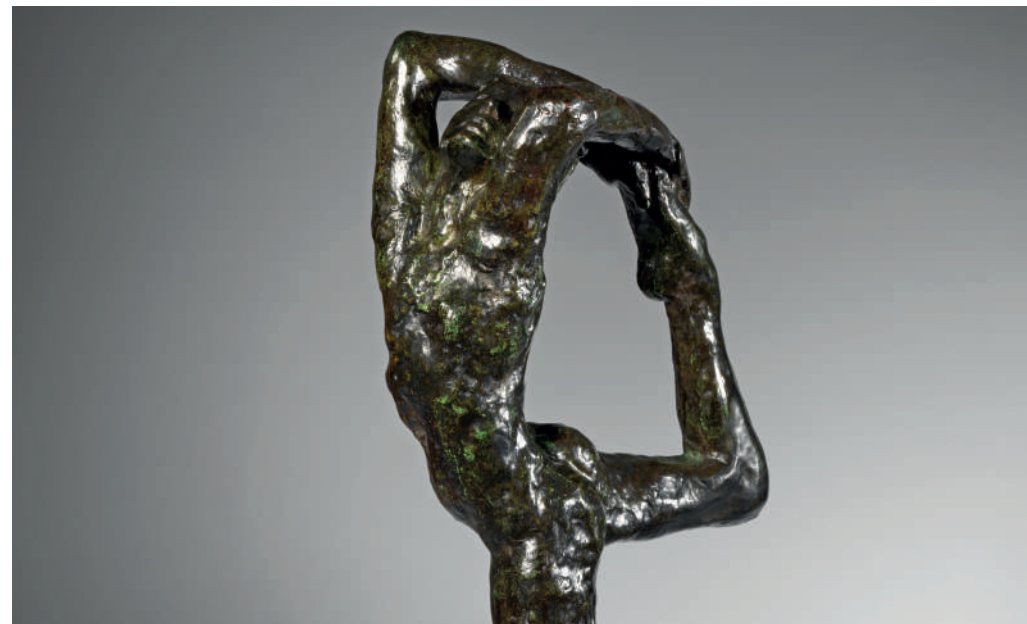
We have a rich mix in our programme this autumn. Back in 2019, we were honoured to be selected as the inaugural partner in the National Gallery's new Contemporary Fellowship with Art Fund. Just before the first lockdown, our curator Will Cooper



and I joined an international panel to select the leading Mumbai-based artist Nalini Malani. Nalini has spent the two years since studying our two collections and has produced an amazing exhibition of animated projections that will be debuted in the Holburne's Roper Gallery in October. Along with the two other exhibitions at the Holburne and at The Edge, this ambitious project demonstrates the Holburne's commitment to bring the greatest art of all periods to Bath and the South West.

We continue to live in challenging times, and I hope you agree that it is especially at such times that art, in all its forms, becomes all the more precious and important.

Chris Stephens
Director



Above: Auguste Rodin (1840–1917) *Dance Movement A (detail)* Modelled c. 1911, cast 1947 by Alexis Rudier (no. 4/12) Bronze Private Collection Photograph: Ken Adlard, New Moon Photography

Rodin-Degas Impressionist Sculpture

24 September to 8 January 2023

Celebrating two towering figures of modern European art: Auguste Rodin (1840–1917) and Edgar Degas (1834–1917), this display focusses on the artists' equally radical representations of the human body.

Both artists used sculpture to explore the limits and extremes of the human body. Whether in motion, stationary, or poised for imminent movement, these figures cast in bronze have a palpable sense of energy and vitality. Employing varying degrees of abstraction both create a sense of the figure in space and use textured, expressive surfaces to enhance the play of light; the

closest sculpture comes to the qualities of Impressionist paintings.

The show features some of the most iconic sculptures of the period including Degas' *Little Dancer Aged Fourteen* (1880), and *Dancer Looking at the Sole of her Foot* (modelled 1896–1911), plus Rodin's *Iris, Messenger of the Gods* (modelled c.1890–9), *Age of Bronze* (modelled 1875–76), and *Eve* (modelled 1881).

Bringing together some of the most important sculptures of the 19th and 20th centuries, mostly from private collections, the dynamic energy of these naked forms will be seen in telling contrast with the sedate poses of our 18th century Picture Gallery.

Nalini Malani

My Reality is Different

7 October 2022 to 8 January 2023

We are delighted to be the first venue for a new National Gallery

Contemporary Fellowship with Art Fund to showcase the work of internationally renowned artist Nalini Malani.

Malani has created over 60 striking new animations based on 25 paintings featuring famous paintings from the National Gallery and the Holburne. Projections over 40 metres of wall will immerse the viewer in a panorama of nine large films which create one monumental artwork, *My Reality is Different*.

Pictures by Caravaggio and Bronzino in the National Gallery's collection, and by Jan van der Venne and Johann Zoffany in our collection, have inspired the animations in which classical stories have been transformed, by playful hand-drawn animations made using an iPad, that reveal and conceal different

aspects of the paintings to display the works from an alternative, and critical point of view.

Embodying the role of the artist as a social activist, Malani has pushed boundaries and enjoyed experimenting to

explore the possibilities of the moving image and to allow new stories and interpretation to emerge.

This exhibition will open at the National Gallery next year.



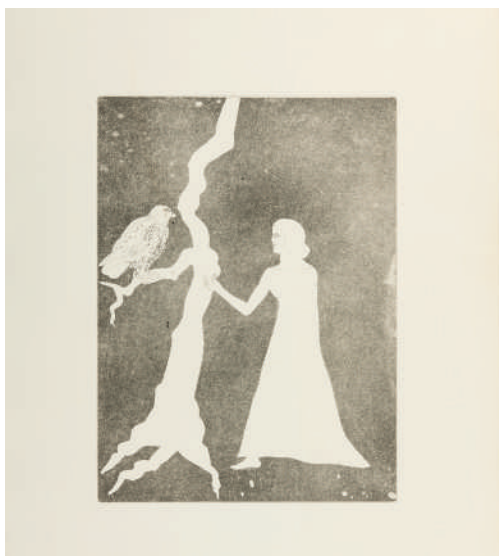
Above: Nalini Malani, *My Reality is Different*, 2022 © Nalini Malani



Above: Nalini Malani, *My Reality is Different*, 2022 © Nalini Malani



Above: *Herakles and the Lion's Mask* Etching with aquatint, 1988 © The Holburne Museum. Photography: Peter J Stone



Above: *The Squire's Tale* Etching with aquatint on copper, 1972, © The Holburne Museum. Photography Peter J Stone

Elisabeth Frink Strength & Sensuality

24 September 2022 –
8 January 2023

In 2019 we received a bequest of 35 objects from the estate of sculptor Dame Elisabeth Frink (1930–1993). The artworks included sculptures, drawings, etchings, and screen prints. This new display celebrates this important acquisition by showcasing a selection of the works.

Featuring themes such as storytelling, animals, humour and violence, Elisabeth Frink: *Strength & Sensuality* is the Holburne's first opportunity to show a selection of Dame Elisabeth Frink's bronzes and works on paper. The 11 works included depict her unique take on some of the most loved and well-known tales from *Chaucer's The Canterbury Tales* and classical Greek mythology, in her *Children of the Gods* series of etchings. Together, they examine an almost unknown, or indeed forgotten, but important aspect of Frink's career, as a storyteller and printmaker. Visitors will also be able to see a number of Frink's best-known motifs, winged figures, male torsos and horses.

Elisabeth Frink: *Strength & Sensuality* is devised in collaboration with a Bath Spa University student, Harriet Rhodes, as part of the Holburne's partnership with universities in the area and our commitment to helping people develop a career in the arts.



Above: *The Shuttle*, 1975, courtesy Flowers Gallery



Above: *Major Battle*, 1984, courtesy Flowers Gallery

Richard Smith Kites

28 September – 17 December |
The Edge, University of Bath

Richard Smith was one of the most innovative and celebrated painters in Britain in the 1960s and 1970s; working locally in the 1970s at his studio near Chippenham. We are excited to present five of Smith's distinctive kite paintings as a group for the first time since his retrospective at Tate Gallery in 1975. Seen as the father of Pop Art, a mentor to numerous artists including David Hockney, he repeatedly sought to reinvent the language of painting. This exhibition is timed to coincide with the publication of the first book on the artist: *Richard Smith: Artworks 1954–2013*, published by the Estate of Francis Bacon and Thames and Hudson.

Calendar

Sep

23 September – 2 October
Bath Children's Literature
Festival

24 September – 8 January 2023
Rodin-Degas: Impressionist
Sculpture

24 September 2022 –
8 January 2023
Elisabeth Frink: Strength &
Sensuality

28 September –
17 December 2022
Richard Smith: Kites

30 September | 5–9pm
Thinking Outside the frame –
women in the arts

Oct

20 October | 7pm
Lecture by Will Cooper and
Dr Zehra Jumabhoy

7 October 2022 –
8 January 2023
Nalini Malani: My Reality
is Different

8 October 6.30–10pm
Friends Quiz

25 October | 10am–1pm
Half-Term family creativity –
Drop-in session

28 October | 5–9pm
Up Late Halloween

Nov

6 November | 11am–4pm
Autumn Leaves book sale

12 November | 10am–6pm
Exclusive trip to Pangolin
Foundry & Lypiatt Park

25 November | 5–9pm
Up Late – Live Art Event!

26 November | 10am–4.30pm
Figurative sculpture
(14 – 18 year olds)

26 November | 6.30pm
A Winter's Tale Concert

30 November
Compton Verney trip

Dec

3 December | 10.30am–12.30pm
Make a dancing Sugar Plum
Fairy or Mouse King inspired
by Rodin and Degas

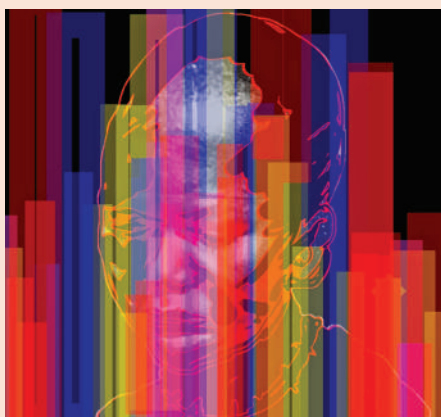


Events

More information available at holburne.org

20 October | 7pm | £10

Dr Zehra Jumabhoy and Will Cooper Lecture



Join art historian Dr Zehra Jumabhoy and curator Will Cooper to discuss Nalini Malani's National Gallery Contemporary Fellowship, with Art Fund, *My Reality is Different*. Dr Zehra Jumabhoy is an art historian specialising in modern and contemporary South Asian art. She is interested in exploring and analysing the socio-political contexts of South Asian art history. Will Cooper is the Holburne Museum's curator of contemporary art and has worked closely with Nalini Malani in the development of this exhibition. Join us to unpack themes embedded within this vital commission.

Don't Miss Up Late 25 November (see p.11) where the exhibition *My Reality is Different* will be further explored by the show's curators.

12 November | 10am–6pm | £65

Trip to Pangolin Foundry and Lypiatt Park



Lynn Chadwick made his home in Lypiatt Park, a Grade I listed building on the edge of Stroud. One of the giants of 20th-century sculpture, Chadwick's unique and singular work spanned 50 years and he created over a thousand pieces. His presence in the area has left a legacy of fine craftsmanship and reputation for excellence with Stroud becoming home to many established and world-leading artists. Pangolin Foundry was created in Chalford valley because of Chadwick. It is now one of the country's leading sculpture foundries, casting for an international clientele, still using traditional methods and skills and priding itself on fine craftsmanship.

This trip is exclusively for Patrons and Director's Circle members and places are limited. To book please email development@holburne.org

Last Friday of the month

Holburne Up Late

Relax and enjoy the Holburne after hours either with a social drink in the Garden Cafe, or join creative and thought-provoking events and workshops inspired by our collection, exhibitions and seasonal themes. Further information can be found on our website www.holburne.org

The next Holburne Up Late events are detailed below.



Above: Still from *The Mad Hatter's Tea Party*, go to www.tallulahswirls.co.uk to find out more

Thinking Outside the frame – women in the arts 30 September | 5–9pm

A series of hands-on, interactive activities looking at the presence and absence of women from the arts. All too often women are depicted in the visual arts to satisfy a certain (male) gaze. What happens when we disrupt these depictions, and we give women the space to tell their own stories?

Join us for an evening of sharing and discovery, that will include a scavenger hunt, banner-making, open discussions, and an imagined dinner party!

Further Information

FREE entry to our
Collection Galleries
Drinks and DJ in the
Garden Café
5–9pm (Gallery last
admission 8.30pm)

Halloween at the Holburne 28 October | 5–9pm | FREE entry for families

This spooktacular evening at the Holburne includes *Down the Rabbit Hole*, a fantastical interactive shadow puppet show including adventure with music and colourful projections.

Join the adventure and meet the spooky Cheshire Cat, the Pig Baby and other very curious characters from the Mad Hatter's Tea Party! Bring along your own shadow puppet by booking in advance for a shadow puppet making activity.

Further Information

Museum trail
FREE face painting
Fancy dress competition
Two Performances 6.15
and 7.15pm

Live Art Event! 25 November | 5–9pm

Art as Social Activism! Take part in creating a large-scale mixed-media artwork inspired by Nalini Malani's *My Reality is Different*. Respond to and reinterpret the Holburne's 18th-century collection, challenging perceptions of gender, nationality, empire, and colonialism.

Priyesh Mistry and Will Cooper, curators of Nalini Malani's *My Reality is Different*, invite visitors to an informal walk through of the exhibition. Hear insights into production, dive deeper into themes explored, and share your own thoughts and experiences of the exhibition in this casual, informal setting.

Further Information

FREE
All materials provided
Open to all – most suitable for ages 16+



30 November | £75

Day trip to see Dutch Flowers exhibition at Compton Verney

As the days shorten and summer colours disappear from our gardens, this is an opportunity to see a wonderful exhibition tracing the development of Dutch flower painting from its beginnings in the early 17th century to the height of its popularity in the late 18th century. It features a selection of the finest examples of Dutch flower paintings from the National Gallery's collection, including works by Bosschaert the Elder, Rachel Ruysch and Jan van Huysum. Ticket includes return private coach transport, arrival refreshments, private guided tour of the exhibition, lunch, as well as free time to explore the main collections.

Friends Quiz

8 October | 6.30–10pm | £32.50

Following a thoroughly enjoyable evening last year, we are happy to announce another quiz evening, with the Holburne's very own Quizmaster, Howard Davies – a Mastermind contestant and winner on Pointless. He has devised a new quiz to task your little grey cells, with wines and platters of delicious homemade savoury and sweet delicacies and treats to enjoy while your team deliberates!

Tickets are £32.50 to include drinks, a two-course supper with wine, plus a quiz.

Autumn Leaves book sale

6 November | 11am to 4pm

Come along to browse and buy from our wonderful array of good quality, hand-picked secondhand books. A wide range of subjects from art and architecture, to history, gardening, cooking and lots more. Music CDs and handmade greeting cards also for sale. All proceeds go to help the Museum.

Left: Jan van Huysum, Flowers in a Terracotta Vase, 1736-7, (c) National Gallery, London



A Winter's Tale Concert

26 November | Doors open 6.30pm | Starts 7.30pm | £24

Doors open at 6:30pm. Refreshments available in the café. Concert 7.30pm in the Ballroom

A *Winter's Tale* – after their sell-out yuletide performance last year, this year's talented crop of Dowland Youth Works musicians return to the Holburne for a winter's evening of music, songs and skits from Tudor times. Directed from the lute by Sam Brown and Laurence Williams, their programme will include feisty numbers from their namesake, alongside popular Elizabethan tunes, and even a scene or two from Shakespeare.

The events on these pages have been organised by Mark Hake, Jonno Davis and the Supporters Committee. All proceeds support the Holburne Museum.

To book and for more information visit:
holburne.org/planning-your-visit/whats-on

Any problems email
friends@holburne.org

Creativity for all

Haunted Houses to Sugar Plum Fairies - get making and creating this season!

Half-Term family creativity drop-in session

25 October | 10am-1pm | FREE

Pop in and make a Haunted House to take away with you! Brilliant materials and lots of creative inspiration – all welcome.

Figurative sculpture – Day workshop

26 November | 10am-4.30pm | £60*

Take inspiration from the dynamic figurative sculptures of Degas and Rodin in our Impressionist Sculpture exhibition. Learn how to construct an armature and sculpt a 3-D figure, supported by Anna Gillespie, a practicing professional artist www.annagillespie.co.uk

Suitable for Art GCSE and A level students, and anyone between 14 to 18 years old.

*includes all materials

Christmas is coming

3 December | 10.30am-12.30pm | £5*

Make a dancing Sugar Plum Fairy or Mouse King inspired by Rodin and Degas. Designed for families to enjoy creative making together, these 2-hour sessions will be led by an artist. Expect beautiful materials and a festive atmosphere! Children must be accompanied by an adult (suitable for 4 years +).

*pre-booking essential

Space to Make

Museum opening hours | FREE

FREE family-friendly creative space on the ground floor. Creative activities inspired by our current exhibitions for everyone to enjoy. All materials provided.

Bath Children's Literature Festival

23 September – 2 October

We are delighted to be hosting some exciting events as part of Europe's largest stand-alone children's book festival.

The Festival includes a return to Bath for much-loved national treasures Michael Rosen and Jacqueline Wilson; TV comedian Rosie Jones, award-winning writer Elle McNicoll, former CBeebies presenter Cerrie Burnell, the current Waterstone's Children's Laureate Cressida Cowell, well-known entertainers turned successful children's authors – David Baddiel, Julian Clary, Richard Ayoade and Dermot O'Leary – as well as Emma Carroll, Patrice Lawrence, Antony McGowan, Hannah Gold, Kiran Millwood Hargrave and Katherine Rundell who are all releasing new novels and among the many who will be appearing at this year's festival. For more information visit: bathfestivals.org.uk/childrens-literature



Support

Patron and Director's Circle

Become a Patron or Director's Circle Member today and help ensure the Holburne's future. Patrons and Director's Circle members play a vital role in supporting us and it is thanks to our family of supporters that the Holburne continues to thrive as a Museum of national standing.

Patrons

Patron membership starts at £600 a year and is for those who love the Holburne and would like to provide an annual gift to support our programme.

Patron Benefits:

- Unlimited admission
- Invitations to evening Private Views
- Invitations to join special trips and bespoke tours of other galleries.
- Behind the scenes tours of the collection.
- Invitation to the annual summer party.
- 10% off in our shop and Garden Cafe.
- Acknowledgement of support on our donor board (unless you wish to remain anonymous).

Director's Circle

Our Director's Circle membership starts at £3,000 a year and includes a select group of individuals who wish to support our annual programme and enjoy an even closer relationship with the Museum.

In addition to Patron benefits, Director's Circle members also receive:

- Invitations to exclusive Private View Breakfasts and opening parties
- Complimentary catalogues
- Regular contact with our Director and Curators
- Priority booking and discount on private hire of the Museum.

If you would like more information about these memberships, please contact development@holburne.org

With thanks...

Nalini Malani: *My Reality is Different*

Supported by The National Gallery
and Art Fund

Rodin-Degas: *Impressionist Sculpture*

Generously supported by Blavatnik Family
Foundation and Daniel Katz Gallery

Richard Smith: *Kites*

Supported by The Estate of Francis Bacon
and Hazlitt Holland-Hibbert, London

Elisabeth Frink: *Strength & Sensuality*

Courtesy of Beaux Arts London

THE
NATIONAL
GALLERY



Art Fund_



BLAVATNIK
FAMILY FOUNDATION

Daniel Katz Gallery

Coming Soon...

Alberta Whittle: *Dipping below a waxing moon, the dance claims us for release*
27 Jan – 7 May 2023

Illustrating the World: Dürer and Renaissance Books
21 Jan – 23 April

Unlimited: Art for Everyone in the 1960s
18 February – 1 April

Right: Alberta Whittle by
Matthew A Williams

Cover Image: *Little dancer aged fourteen*, Edgar Degas,
1922, UEA 2, Sainsbury Centre

The Holburne Museum
Great Pulteney Street, Bath BA2 4DB
01225 388569

The Museum is open Mon-Sat: 10-5
Sunday and Bank Holidays: 11-5
Closed 24-26 Dec and 1 Jan

The Holburne Museum is an
independent museum and
charity no:310288

THE
HOLBURNE
MUSEUM