



PATHWAYS TO WELLBEING

Creativity 4 Wellbeing @ Holburne
Museum

Making of Me Collage
Inspiration

Extra Resources



Anna Bu
Kliever



Barbara Kruger

your body

is a

battlearound

Barbara
Kruger

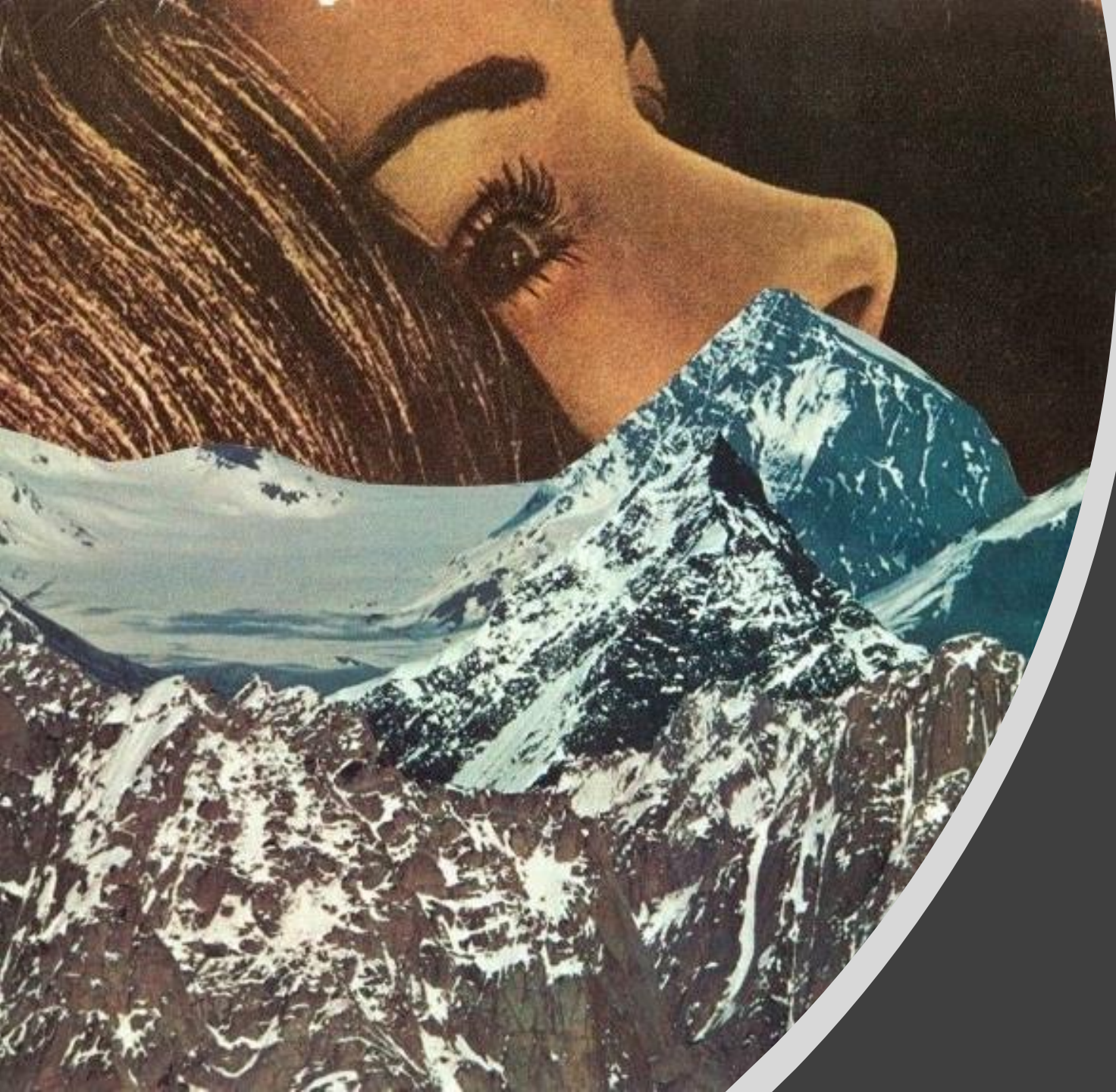




Hannah Hoch



Heliya Refaei



Jesse Treece



John Stezaker

GET OUT FROM



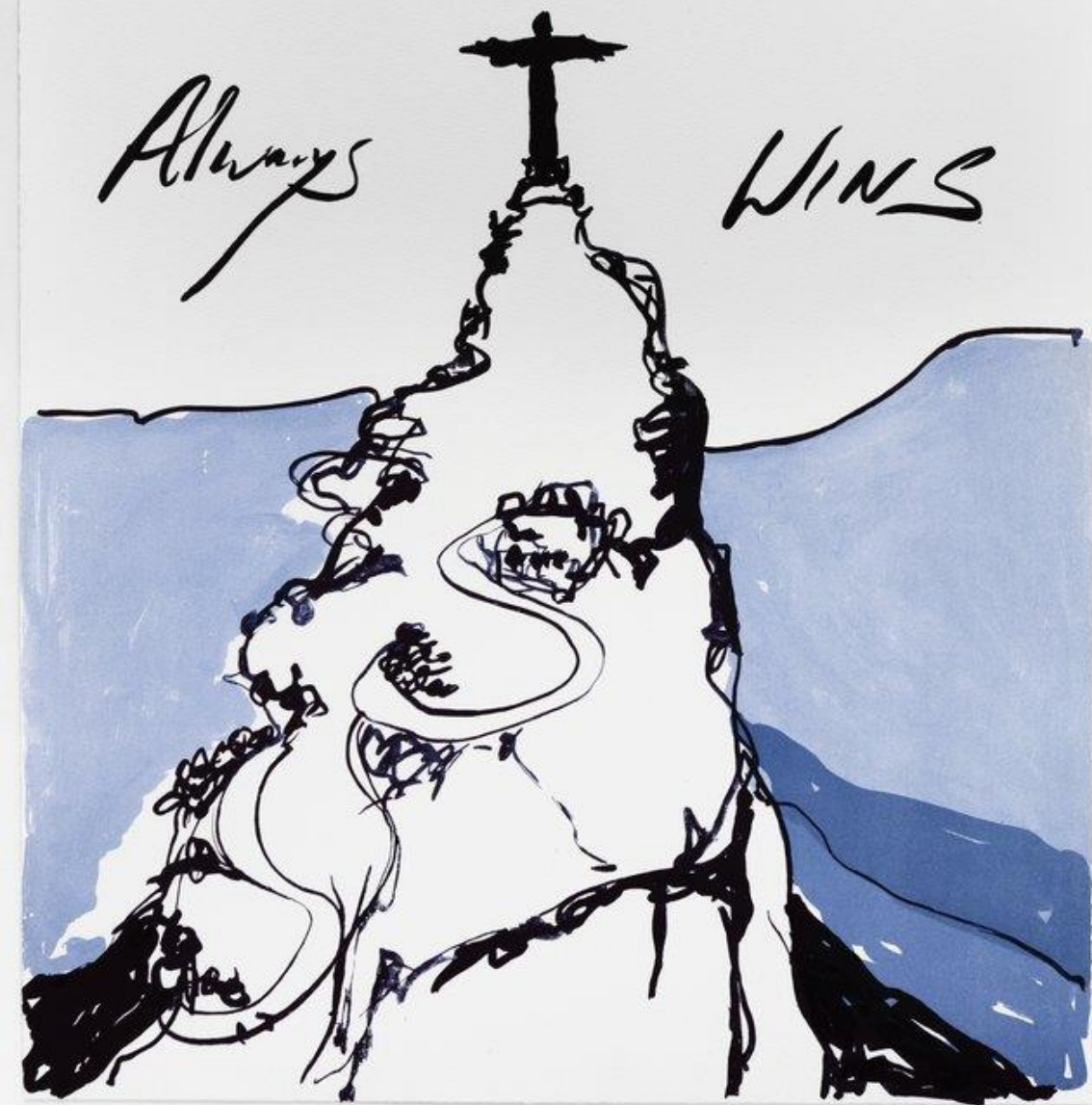
LIVING INSIDE OF ME

Tracy Emin

TRUE Love

Always

WINS

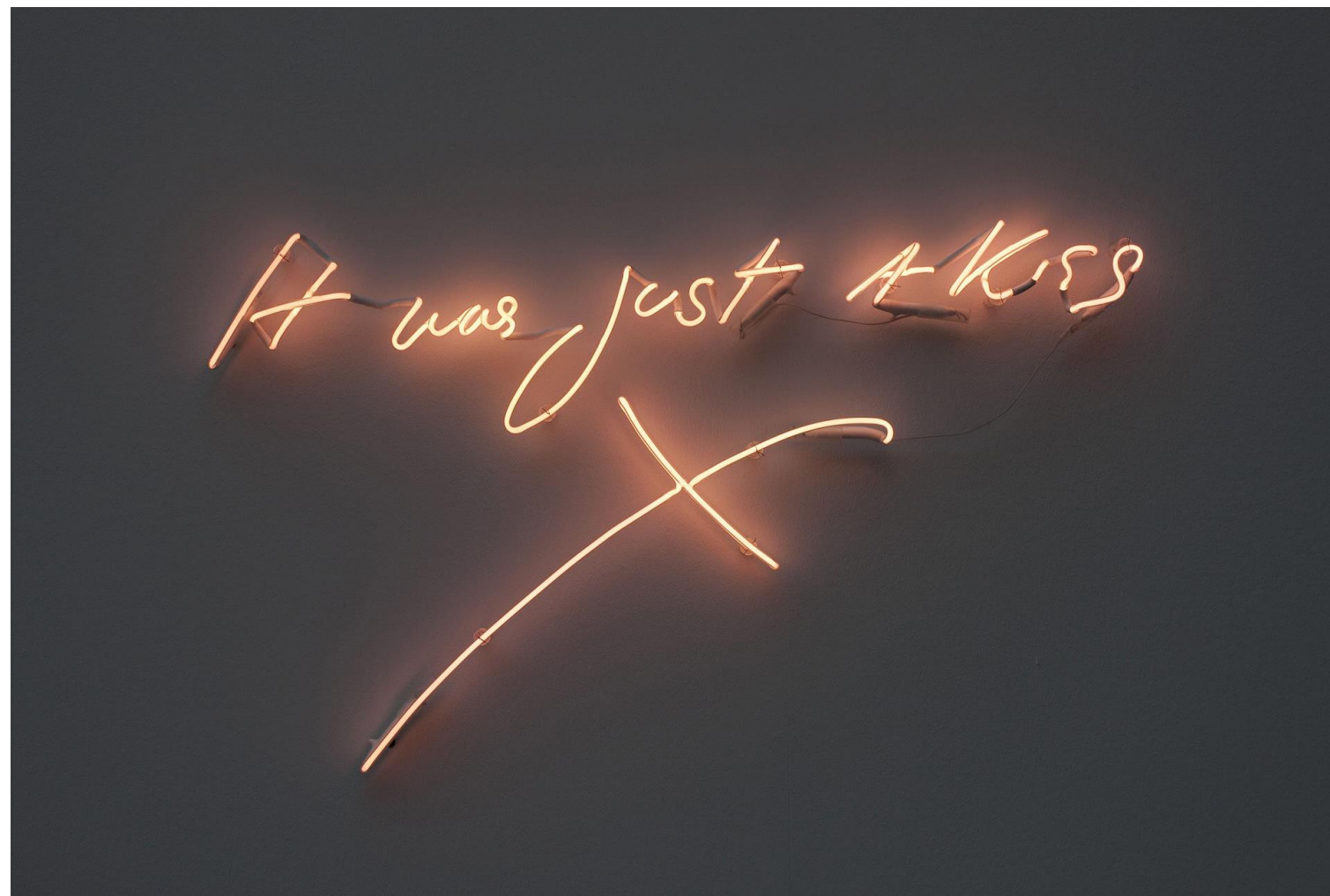


Tracy Emin

Tracy Emin

You inspire me with
Your determination
And I Love You





Tracy Emin



Riikka Fransila



Jessica Whittingham



Fabu Pires

Things to think about



THE
HOLBURNE
MUSEUM

- Powerful/meaningful words (Kruger and Emin)
- Similar textures (Kliwer and Treece)
- Repetition (Refaei)
- Scale (Hoch)
- Uncanny juxtapositions (Stezaker)
- Organic forms growing out of parts of your picture (various artists)